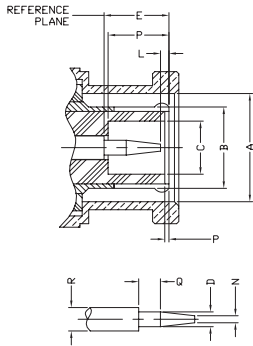
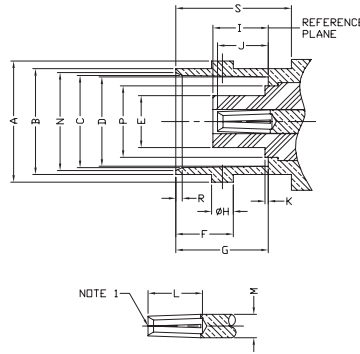


MALE



LETTER	INCHES [MILLIMETERS]	
	MINIMUM	MAXIMUM
A	.385 [9.78]	.390 [9.91]
B	FLARED TO MEET ELECTRICAL & MECHANICAL REQUIREMENTS	
C	.190 [4.83]	-
D	.052 [1.32]	.054 [1.37]
E	5.33 [210]	.230 [5.84]
F	.006 [0.15]	.018 [0.46]
L	.003 [0.08]	.040 [1.02]
N	-	.025 [0.64]
P	.208 [5.28]	.228 [5.79]
Q	.078 [1.98]	-
R	.081 [2.06]	.087 [2.21]

FEMALE



LETTER	INCHES [MILLIMETERS]	
	MINIMUM	MAXIMUM
A	.432 [10.97]	.436 [11.07]
B	.375 [9.60]	.382 [9.70]
C	.327 [8.31]	.333 [8.46]
D	.319 [8.10]	.321 [8.15]
E	-	.186 [4.72]
F	.204 [5.18]	.208 [5.28]
G	.327 [8.31]	.335 [8.51]
H	.075 [1.91]	.081 [2.06]
I	.188 [4.78]	.208 [5.28]
J	.186 [4.72]	.206 [5.23]
K	-	.006 [0.15]
L	.195 [4.95]	-
M	.081 [2.06]	.087 [2.21]
N	.346 [8.79]	.356 [9.04]
P	-	.256 [6.50]
R	.015 [0.38]	.030 [0.76]
S	.414 [10.52]	-

NOTE 1: I.D. TO MEET VSWR AND CONTACT RESISTANCE WHEN MATED WITH .052/.054 DIA. PIN

SPECIFICATIONS

ELECTRICAL SPECIFICATIONS

IMPEDANCE: 50 Ω
WORKING VOLTAGE RATING: 500 VRMS @ SEA LEVEL
FREQUENCY RANGE: 0-4 GHz

MECHANICAL SPECIFICATIONS

MATING: 2-STUD BAYONET LOCK COUPLING
INTERFACE: MIL-STD-348, SECTION 301
CABLING: CLAMP, SOLDERLESS CLAMP, CRIMP AND TWIST ON

PLATING

G - GOLD
N - NICKEL
S - SILVER
SS - STAINLESS STEEL
TP - THERMOPLASTIC

DIELECTRIC MATERIAL

D - DELRIN
PP - POLYPROPYLENE
T - PTFE
TP - THERMOPLASTIC

CABLE GROUPS

GRP	FOR THESE CABLE TYPES
B	TIMES LMR-100A; RG-174, 188, 188A, 316/U; ALPHA 9174, 9316; BELDEN 7805A, 8216, 83269, 83284, 84316; COMMSCOPE AMC-174, WBC-100
BL	RG-316/U DOUBLE SHIELD; RD-316; BELDEN 83269; COLEMAN 1596
C	TIMES LMR-195; RG-58, 58A, 58C, 141, 141A/U; ANDREW CNT-195, CNT-195-DB, CNT-195-FR; BELDEN 7806A, 8219, 8240, 8259, 8262, 9201, 9203, 9310, 9311; COMMSCOPE WBC-195, WBC-195R, 0268, TCOM-195, TCOM-195-FR; HARBOUR HPF195
C1	RG-55, 55A, 55B, 142, 142A, 142B, 223, 400/U; ALPHA 9055, 9055B, 9223; BELDEN 7806A, 83242, 84142
C2	TIMES LMR-200, MSI-22; ALPHA 9848; BELDEN 7807A; COMMSCOPE AMC-58LL, WBC-200, WBC-200R, TCOM-200, TCOM-200-FR; HARBOUR HPF200
E	RG-8, 8A, 213/U; ALPHA 9008, 9213; BELDEN 8267, 9251, 9880, 89880; INTERCOMP 4082, 22132; TIMES AA-4478
I	RG-8/U TYPE; BELDEN 9913; COMMSCOPE BWC-400, BWC-400R, CUSHCRAFT ULTRALINK TL93605; TIMES AA-5886, AA-6146, LMR-400, LMR-400 ULTRAFLEX; T-COM-400
M	RG-122/U; BELDEN 82907, 88240, 89907; MOTOROLA WHITE PTFE; TIMES MSI-15
P	ANTENNA SPECIALIST K214, PRO-FLEX 800; TIMES AA-3096
PL	BELDEN 89913
X	RG-8X; BELDEN 9258; COMMSCOPE BWC-240, BWC-240R; MICRO 8/U; REMEE 1600; SAXTON 8315; TIMES LMR-240, LMR-240 ULTRAFLEX

FOR A MORE EXTENSIVE LISTING OF CABLE GROUPS



Strain reliefs for RG-58/U — available separately
PT-4015-03-BK (black), PT-4015-03-BL (blue)

BNC — 50 OHM



FIG. 9
RFS-2022



FIG. 10
RFS-2023



FIG. 11
RFB-1106-B-ST, -B1



FIG. 12
RFB-1106-I

PHOTOS FOR REFERENCE ONLY, SHOWN AT 100% ACTUAL SIZE.

FOR MOUNTING CONFIGURATIONS

PART #	FIG	DESCRIPTION	CBL GRP	NOTES	REPLACES OR EQUIVALENT TO	PLATING			RECOMMENDED TOOL
						BDY	P/C	DIE	
RFB-1100-2	1	Male Clamp	C, C1	RG-58/U, RG-142/U, RF-55/U	UG-88D/U	N	G	D	RFA-4009-204
RFB-1100-2ST	1	Male Clamp	C, C1	RG-58/U, RG-142/U, RG-55/U	UG-88/U, C/U, D/U, E/U	S	G	T	RFA-4009-204
RFB-1100-B	1	Male Clamp	B	RG-174/U, RG-316/U		N	G	T	RFA-4009-204
RFB-1100-C2ST	1	Male Clamp	C2	for Times LMR-200		S	G	T	RFA-4009-204
RFB-1101-1EN	2	Male Clamp	E, L3	RG-8/U, RG-213/U	UG-959A/U	N	G	T	RFA-4009-206
RFB-1101-1P	1	Male Clamp	P	for Proflex		N	G	T	RFA-4009-203
RFB-1101-1SI	2	Male Clamp	I	for RG-8/U Type, Belden 9913 & Times LMR-400		S	G	T	RFA-4005-200
RFB-1101-1X	1	Male Clamp	X	for RG-8/X & Times LMR-240		N	G	D	
RFB-1101-PL	2	Male Clamp	PL	for Belden 89913 Plenum		S	G	T	RFA-4005-200
RFB-1102-I	3	Male Solderless Clamp	C, C1	RG-58/U, RG-142/U, RG-55/U		N	S	T	
RFB-1104	4	Male Twist-on	C	for RG-58/U		N	S	D	
RFB-1106-2	5	Male Crimp	C	for RG-58/U	UG-1785/U	N	G	D	RFA-4009-206
RFB-1106-2ST	5	Male Crimp	C	for RG-58/U	UG-1785/U	S	G	T	RFA-4009-206
RFB-1106-2T	5	Male Crimp	C	for RG-58/U	UG-1785/U	N	G	T	RFA-4009-206
RFB-1106-2TC1	5	Male Crimp	C1	for RG-142/U & RG-55/U		N	G	T	RFA-4009-206
RFB-1106-5	6	Male Crimp	B	Large Ferrule, for RG-174/U, RG-316/U		N	G	T	RFA-4009-204
RFB-1106-5B1	6	Male Crimp	B1	Large Ferrule, for RG-316 Double Shield		N	G	T	RFA-4009-204
RFB-1106-6	7	Male Crimp	B	Small Ferrule, for RG-174/U & RG-316/U		N	G	T	RFA-4009-204, RFA-4089
RFB-1106-9	8	Male Quick Disconnect Crimp	C	Universal for BNC, & TNC, for RG-58/U		N	G	D	RFA-4009-206
RFS-2022	9	BNC Male Quick Disconnect Crimp	C	for RG-58/U		N	G	T	RFA-4009-206
RFS-2023	10	BNC Female Quick Disconnect Crimp	C	for RG-58/U		N	G	T	RFA-4009-206
RFB-1106-B-ST	11	Male Crimp	B	for RG-174/U & RG-316/U		S	G	T	RFA-4009-204
RFB-1106-B1	11	Male Crimp	B1	for RD-174/U & RG-316		N	G	T	RFA-4009-204
RFB-1106-C-03	5	Male Crimp	C	for RG-58/U		N	G	D	RFA-4009-206
RFB-1106-C1	5	Male Crimp	C1	for RG-142/U		N	G	D	RFA-4009-206
RFB-1106-C1ST	5	Male Crimp	C1	for RG-142/U & RG-55/U		S	G	T	RFA-4009-206
RFB-1106-C2	5	Male Crimp	C2	for Times LMR-200		N	G	T	RFA-4009-206
RFB-1106-C2ST	5	Male Crimp	C2	for Times LMR-200		S	G	T	RFA-4009-206
RFB-1106-C2T	5	Male Crimp	C2	for Times LMR-200		N	G	T	RFA-4009-206
RFB-1106-I	12	Male Crimp	I	for times LMR-400		N	G	T	RFA-4005-300
RFB-1107-1P	5	Male Crimp	P	for Proflex		N	G	D	RFA-4009-203
RFB-1107-1X	5	Male Crimp	X	for RG-8/X & Times LMR-240		N	G	D	RFA-4009-203
RFB-1107-Z	5	Male Crimp	C3, M	for Motorola White PTFE, Belden 89907		N	G	T	RFA-4009-206



FIG. 13
RFB-1110-1, C1, C1ST,
C2, C2S



FIG. 14
RFB-1110-B



FIG. 15
RFB-1110-C-04



FIG. 16
RFB-1110-C3



FIG. 17
RFB-1110-S



FIG. 18
RFB-1111



FIG. 19
RFB-1112-1B



FIG. 20
RFB-1112-1B-03



FIG. 21
RFB-1112-1W



FIG. 22
RFB-1112-B



FIG. 23
RFB-1112-B-03



FIG. 24
RFB-1112-W

PHOTOS FOR REFERENCE ONLY, SHOWN AT 100% ACTUAL SIZE.

FOR MOUNTING CONFIGURATIONS

PART #	FIG	DESCRIPTION	CBL GRP	NOTES	REPLACES OR EQUIVALENT TO	PLATING			RECOM- MENDED TOOL
						BDY	P/C	DIE	
RFB-1110-1	13	Male Right Angle	C	for RG-58/U		N	G	T	RFA-4009-206
RFB-1110-B	15	Male Right Angle	B	for RG-174A/U & RG-316/U		N	G	T	RFA-4009-204
RFB-1110-C-04	16	Male Right Angle Clamp	C , C1	for RG-55/U, RG-58/U & RG-142/U		S	G	T	
RFB-1110-C1	13	Male Right Angle Crimp	C1	for RG-55/U & RG-142/U		N	G	T	RFA-4009-206
RFB-1110-C1ST	13	Male Right Angle Crimp	C1	for RG-55/U & RG-142/U		S	G	T	RFA-4009-206
RFB-1110-C2	13	Male Right Angle Crimp	C2	for Times LMR-200		N	G	T	RFA-4009-206
RFB-1110-C2S	13	Male Right Angle Crimp	C2	for Times LMR-200		S	G	T	
RFB-1110-C3	14	Male Right Angle Crimp	C3	for Motorola White PTFE, Belden 89907		N	G	T	RFA-4009-206
RFB-1110-S	17	Male Right Angle Clamp	C	for RG-58/U		S	S	T	
RFB-1111	18	Female Right Angle PCB Mount		with Triple D-Flat, Diecast Zinc		N	G	PP	
RFB-1112-1B	19	Female Vertical Lo-Profile PCB Mt		with D-Flat & Post Legs, Black		N/TP	G	PP	
RFB-1112-1B-03	20	Female Vertical Lo-Profile PCB Mt		with D-Flat & Snap Legs, Black		N/TP	G	PP	
RFB-1112-1W	21	Female Vertical Lo-Profile PCB Mt		with D-Flat & Post Legs, White		N/TP	G	PP	
RFB-1112-B	22	Female R/A Lo-Profile PCB Mount		with D-Flat & Post Legs, Black		N/TP	G	PP	
RFB-1112-B-03	23	Female R/A Lo-Profile PCB Mount		with D-Flat & Snap Legs, Black		N/TP	G	PP	
RFB-1112-W	24	Female R/A Lo-Profile PCB Mount		with D-Flat & Post Legs, White		N/TP	G	PP	

BNC — 50 OHM

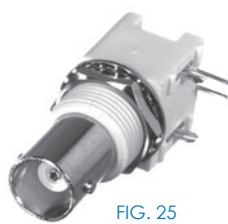


FIG. 25
RFB-1112-W-03



FIG. 26
RFB-1113-1B



FIG. 27
RFB-1113-1B-03



FIG. 28
RFB-1113-1W



FIG. 29
RFB-1113-1W-03



FIG. 30
RFB-1113-B



FIG. 31
RFB-1113-B-04



FIG. 32
RFB-1113-W



FIG. 33
RFB-1113-W-03



FIG. 34
RFB-1115



FIG. 35
RFB-1115-3



FIG. 36
RFB-1115-4



FIG. 37
RFB-1115-5

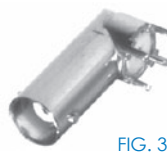


FIG. 38
RFB-1115-6



FIG. 39
RFB-1115-14

PHOTOS FOR REFERENCE ONLY, SHOWN AT 100% ACTUAL SIZE.

FOR MOUNTING CONFIGURATIONS

PART #	FIG	DESCRIPTION	CBL GRP	NOTES	REPLACES OR EQUIVALENT TO	PLATING			RECOMMENDED TOOL
						BDY	P/C	DIE	
RFB-1112-W-03	25	Female R/A Lo-Profile PCB Mount		with D-Flat & Snap Legs, White		N/TP	G	PP	
RFB-1113-1B	26	Female Vertical Hi-Profile PCB Mount		with D-Flat & Post Legs, Black		N/TP	G	PP	
RFB-1113-1B-03	27	Female Vertical Hi-Profile PCB Mount		with D-Flat & Snap Legs, Black		N/TP	G	PP	
RFB-1113-1W	28	Female Vertical Hi-Profile PCB Mount		with D-Flat & Post Legs, White		N/TP	G	PP	
RFB-1113-1W-03	29	Female Vertical Hi-Profile PCB Mount		with D-Flat & Snap Legs, White		N/TP	G	PP	
RFB-1113-B	30	Female R/A Hi-Profile PCB Mount		with D-Flat & Post Legs, Black		N/TP	G	PP	
RFB-1113-B-04	31	Female R/A Hi-Profile PCB Mount		with D-Flat & Post Legs, Black, No Hardware		N/TP	G	PP	
RFB-1113-W	32	Female R/A Hi-Profile PCB Mount		with D-Flat & Post Legs, White		N/TP	G	PP	
RFB-1113-W-03	33	Female R/A Hi-Profile PCB Mount		with D-Flat & Snap Legs, White		N/TP	G	PP	
RFB-1115	34	Female Panel Mount		4 Hole Flange	UG-290A/U	N	G	T	
RFB-1115-3	35	Female Vertical PCB Mount		3 Leg		N	G	T	
RFB-1115-4	36	Female Vertical PCB Mount		4 Leg		S	G	T	
RFB-1115-5	37	Female R/A Panel Mount				N	G	P	
RFB-1115-6	38	Female R/A PCB Mount		Long Diecast Zinc		N	G	T	
RFB-1115-14	39	Female Flange		4 Hole Flange with holes .720" on Center		S	G	T	



FIG. 40
RFB-1115-21



FIG. 41
RFB-1115-S



FIG. 42
RFB-1116, -3



FIG. 43
RFB-1116-11, -NG, -SG



FIG. 44
RFB-1116-B-03



FIG. 45
RFB-1116-I



FIG. 46
RFB-1116-I-03



FIG. 47
RFB-1116-NG-03



FIG. 48
RFB-1117



FIG. 49
RFB-1117-B1-T

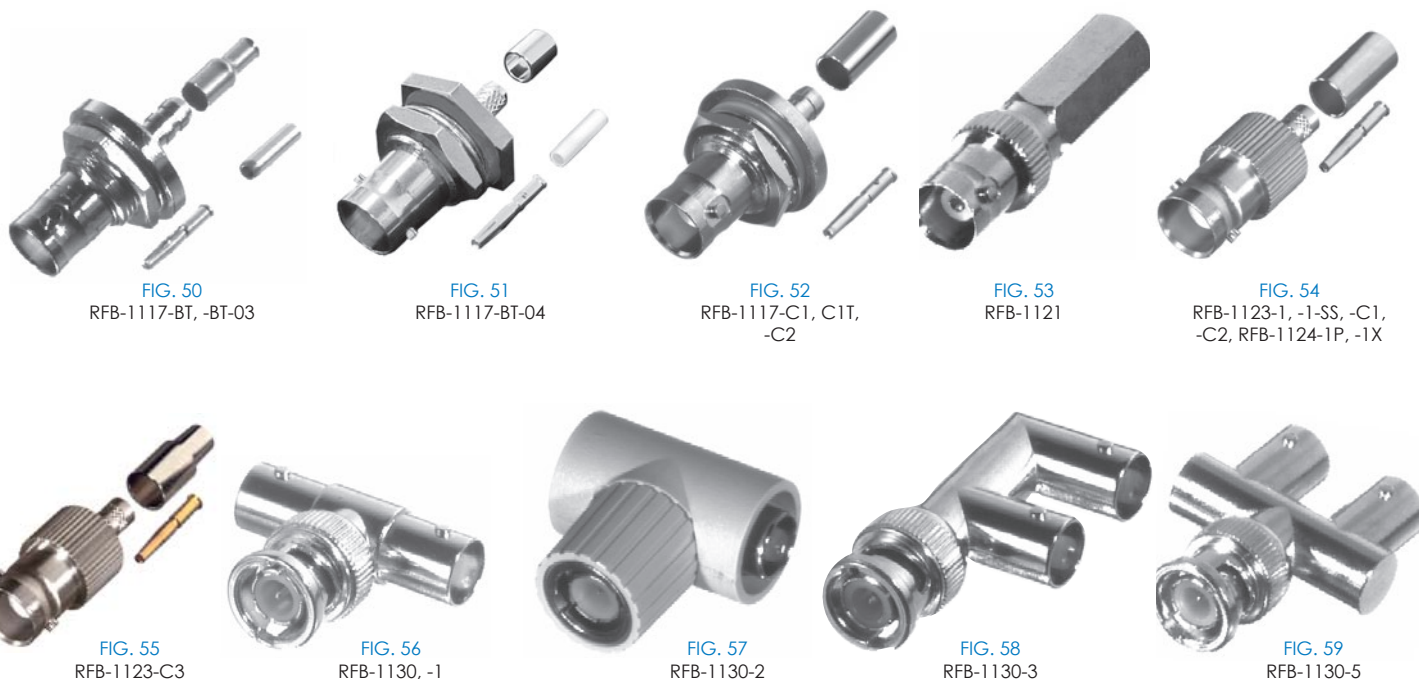
PHOTOS FOR REFERENCE ONLY, SHOWN AT 100% ACTUAL SIZE.

FOR MOUNTING CONFIGURATIONS

PART #	FIG	DESCRIPTION	CBL GRP	NOTES	REPLACES OR EQUIVALENT TO	PLATING			RECOM- MENDED TOOL
						BDY	P/C	DIE	
RFB-1115-21	40	Female Vertical PCB Mount		.5 inch on Center		N	S	T	
RFB-1115-S	41	Female Panel Mount		4 Hole Flange	UG-290A/U	S	G	T	
RFB-1116	42	Female Bulkhead		Front Mount with D-Flat, Diecast Zinc	UG-1094A/U	N	G	D	
RFB-1116-3	42	Female Bulkhead		Front Mount w/ D-Flat & Lockwasher		N	G	T	
RFB-1116-11	43	Female Bulkhead		Front Mount w/ Beryllium Copper Contact, Solder Lug & Solder Cup		N	G	T	
RFB-1116-B-03	44	Female Bulkhead Crimp	<u>B</u>	Front Mount for RG-174/U & RG-316/U		N	G	T	RFA-4005-100 & RFA-4005-05
RFB-1116-I	45	Female Bulkhead		Front Mount with D-Flat, Insulated		N	G	TP	
RFB-1116-I-03	46	Female Bulkhead		Front Mount with D-Flat, Insulated, with .500 Mounting Threads, No Hardware		N	G	D	
RFB-1116-NG	43	Female Bulkhead		Front Mount with D-Flat, Solder Lug & Solder Cup	UG-1094A/U	N	G	T	
RFB-1116-NG-03	47	Female Bulkhead		Solder Cup w/o Hardware		N	G	T	
RFB-1116-SG	43	Female Bulkhead		Front Mount with D-Flat, Solder Lug & Solder Cup	UG-1094A/U	S	G	T	
RFB-1117	48	Female Crimp Bulkhead	<u>C</u>	Rear Mount with D-Flat & O-Ring for RG-58/U		N	G	D	RFA-4009-206
RFB-1117-B1-T	49	Female Crimp Bulkhead	<u>B1</u>	Rear Mount with D-Flat & O-Ring for RG-316 Double Shield, max. Panel Thickness .20"		N	G	T	RFA-4009-204

BNC — 50 OHM

BNC - 50 Ohm



PHOTOS FOR REFERENCE ONLY, SHOWN AT 100% ACTUAL SIZE.

FOR MOUNTING CONFIGURATIONS

PART #	FIG	DESCRIPTION	CBL GRP	NOTES	REPLACES OR EQUIVALENT TO	PLATING			RECOM-MENDED TOOL
						BDY	P/C	DIE	
RFB-1117-BT	50	Female Crimp Bulkhead	B	Rear Mount with D-Flat & O-Ring for RG-174/U, & RG-316/U Max. Panel Thickness .20"		N	G	T	RFA-4009-204
RFB-1117-BT-03	50	Female Crimp Bulkhead	B	Rear Mount with D-Flat & O-Ring for RG-174/U, & RG-316/U Max. Panel Thickness .140"		N	G	T	RFA-4009-204
RFB-1117-BT-04	51	Female Crimp Bulkhead	B	Short Ferrule and Ferrule Stud; for RG-174/U, RG-316/U		N	G	T	RFA-4009-204
RFB-1117-C1	52	Female Crimp Bulkhead	C1	Rear Mount with D-Flat & O-Ring for RG-142/U & RG-55/U		N	G	D	RFA-4009-206
RFB-1117-C1T	52	Female Crimp Bulkhead	C1	Rear Mount with D-Flat & O-Ring for RG-142/U, & RG-55/U Max. Panel Thickness .25"		N	G	T	RFA-4009-206
RFB-1117-C2	52	Female Crimp Bulkhead	C2	Rear Mount with D-Flat & O-Ring for Times LMR-200		N	G	D	RFA-4009-206
RFB-1121	53	Female Twist-On	C	for RG-58/U		N	S	D	
RFB-1123-1	54	Female Crimp	C	for RG-58/U		N	G	T	RFA-4009-206
RFB-1123-1-SS	54	Female Crimp	C	for RG-58/U		SS	G	T	RFA-4009-206
RFB-1123-C1	54	Female Crimp	C1	for RG-142/U & RG-55/U		N	G	T	RFA-4009-206
RFB-1123-C2	54	Female Crimp	C2	for Times LMR-200		N	G	T	RFA-4009-206
RFB-1123-C3	55	Female Crimp	C3	for RG-58/U Plenum		N	G	T	
RFB-1124-1P	54	Female Crimp	P	for Proflex		N	G	D	RFA-4009-203
RFB-1124-1X	54	Female Crimp	X	for RG-8X & Times LMR-240		N	G	D	RFA-4009-203
RFB-1130	56	T Adapter		BNC Male to Double BNC Female	UG-274B/U, C/U	N	G	T	
RFB-1130-1	56	T Adapter		BNC Male to Double BNC Female, Diecast	UG-274B/U, C/U	N	G	D	
RFB-1130-2	57	T Adapter		BNC Male to Double BNC Female, Molded Plastic Jacket	FOR LAN USE	N	G	D	
RFB-1130-3	58	F Adapter		BNC Male to Double BNC Female	FOR LAN USE	N	G	D	
RFB-1130-5	59	Goalpost Adapter		BNC Male to Double BNC Female	FOR LAN USE	N	G	D	

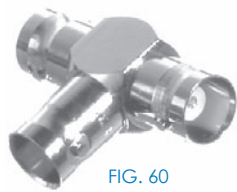


FIG. 60
RFB-1131



FIG. 61
RFB-1132



FIG. 62
RFB-1133

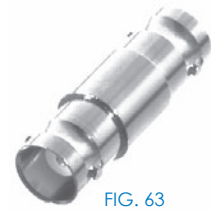


FIG. 63
RFB-1134



FIG. 64
RFB-1135-I, -T



FIG. 65
RFB-1138



FIG. 66
RFB-1143, -03



FIG. 67
RFB-1145



FIG. 68
RFB-1150



FIG. 69
RFB-1150-1, -2-1W



FIG. 70
RFB-1154



FIG. 71
RFB-1160



FIG. 72
RFB-1161

PHOTOS FOR REFERENCE ONLY, SHOWN AT 100% ACTUAL SIZE.

FOR MOUNTING CONFIGURATIONS

PART #	FIG	DESCRIPTION	CBL GRP	NOTES	REPLACES OR EQUIVALENT TO	PLATING			RECOMMENDED TOOL
						BDY	P/C	DIE	
RFB-1131	60	T Adapter		Triple BNC Female		N	S	T	
RFB-1132	61	Right Angle Adapter		BNC Male to BNC Female	UG-306/U, A/U, B/U	N	S	T	
RFB-1133	62	Barrel Adapter		BNC Male to BNC Male	UG-491/U, A/U, B/U	N	G	T	
RFB-1134	63	Barrel Adapter		BNC Female to BNC Female	UG-914/U	N	G	PP	
RFB-1135	64	Female Bulkhead Adapter		Double BNC Female with D-Flat & O-Ring	UG-492/U	N	G	D	
RFB-1135-I	64	Female Bulkhead Adapter		Double BNC Female with D-Flat, Insulated		S	G	D	
RFB-1135-T	64	Female Bulkhead Adapter		Double BNC Female with D-Flat & O-Ring	UG-492/U, D/U	N	G	T	
RFB-1138	65	Adapter		BNC Female to BNC Male, Connector Saver		N	G	D	
RFB-1143	66	Male Bulkhead		Front Mount, D-Flat		N	G	T	
RFB-1143-03	66	Male Bulkhead		Front Mount without Solder Tab, D-flat		N	G	T	
RFB-1145	67	BNC Female to 1/4 x 24 Stud		Adapter for Kenwood Portables TK240 & TK340		N	S	T	
RFB-1150	68	Male Termination		50 Ohm, 1/2 Watt, 1.5 Ghz		N	G	D	
RFB-1150-1	69	Male Termination with Chain		50 Ohm, 1/2 Watt, 1.5 Ghz		N	G	D	
RFB-1150-2-1W	69	Male Termination with Chain		50 Ohm, 1 Watt, 1.5 Ghz,		S	G	T	
RFB-1154	70	Female Right Angle Bulkhead		Front Mount w/ Solder CUP, O-Ring & D-Flat		N	G	T	
RFB-1160	71	Female Crimp	C	Wall Plate Flush Rear Mount with D-Flat for RG-58/U (LAN)		N	G	D	RFA-4009-206
RFB-1161	72	Female Twist-on Clamp	C	Wall Plate Flush Rear Mount with D-Flat for RG-58/U (LAN)		N	G	D	