

SPECIFICATIONS		CABLE GROUPS
<p><b>ELECTRICAL SPECIFICATIONS</b>                      IMPEDANCE: 50 Ω                      WORKING VOLTAGE RATING: 2700 VRMS                      FREQUENCY RANGE: DC TO 7.5 GHz</p> <p><b>MECHANICAL SPECIFICATIONS</b>                      MATING: M 29-1.5 THREADED COUPLING                      INTERFACE: ITL-SPEC-CECC-22190                      CABLING: CLAMP, SOLDER AND CRIMP</p> <p><b>PLATING</b>                      S - SILVER</p> <p><b>DIELECTRIC MATERIAL</b>                      T - PTFE</p>	<b>GRP</b>	<b>FOR THESE CABLE TYPES</b>
	<b>C</b>	TIMES LMR-195; RG-58, 58A, 58C, 141, 141A/U; ANDREW CNT-195, CNT-195-DB, CNT-195-FR; BELDEN 7806A, 8219, 8240, 8259, 8262, 9201, 9203, 9310, 9311; COMMSCOPE WBC-195, WBC-195R, 0268, TCOM-195, TCOM-195-FR; HARBOUR HPF195
	<b>C1</b>	RG-55, 55A, 55B, 142, 142A, 142B, 223, 400/U; ALPHA 9055, 9055B, 9223; BELDEN 7806A, 83242, 84142
	<b>C2</b>	TIMES LMR-200, MSI-22; ALPHA 9848; BELDEN 7807A; COMMSCOPE AMC-58LL, WBC-200, WBC-200R, TCOM-200, TCOM-200-FR; HARBOUR HPF200
	<b>E</b>	TIMES AA-4478; RG-8, 8A, 213/U; ALPHA 9008, 9213; BELDEN 8267, 9251, 9880, 89880; INTERCOMP 4082, 22132
	<b>E</b>	RG-9, 9A, 9B, 214/U; ALPHA 9214; BELDEN 8242, 8268
	<b>I</b>	TIMES AA-5886, AA-6146, LMR-400, LMR-400 ULTRAFLEX; RG-8/U TYPE; ANDREW CNT-400, CNT-400AL, CNT-400-DB, CNT-400-FR, CNT-400-FRP; BELDEN 7810A, 8214, 9913; COMMSCOPE TCOM-400, TCOM-400-FR, TCOM-400-PUR, WBC-400, WBC-400R, CUSHCRAFT ULTRALINK TL93605; HARBOUR HPF400
	<b>L2</b>	TIMES LMR-600, LMR-600 ULTRAFLEX; ANDREW CNT-600, CNT-600-DB, CNT-600-FR, ; COMMSCOPE TCOM-600, TCOM-600-FR, TCOM-600-PUR, WBC-600, WBC-600R
	<b>PL</b>	BELDEN 89913
	<b>SR1</b>	.085 SEMI RIGID; RG-405/U; BELDEN 1671A; RD-179
	<b>SR2</b>	.141 SEMI RIGID; RG-402/U; BELDEN 1673A
	<b>SR3</b>	.250 SEMI RIGID; RG-401/U
	<b>X</b>	TIMES LMR-240, LMR-240 ULTRAFLEX; RG-8X; ANDREW CNT-240, CNT-240AL, CNT-240ALS, CNT-240-DB, CNT-240-FR, CNT-240-W; BELDEN 9258; COMMSCOPE TCOM-240, TCOM-240-FR, WBC-240, WBC-240R; HARBOUR HPF240; MICRO 8/U; REMEE 1600; SAXTON 8315
	<b>FOR A MORE EXTENSIVE LISTING OF CABLE GROUPS</b>	

## Combination Connectors

Our 7-16 DIN combination connectors offer great versatility, allowing assembly in either a right angle or straight position. The images on this page illustrate both configuration possibilities.



# 7-16 DIN

# 7-16 DIN



FIG. 5  
RFD-1630-2-C, -2-C1



FIG. 6  
RFD-1630-2-E



FIG. 7  
RFD-1631-2L2



FIG. 8  
RFD-1640-2



FIG. 9  
RFD-1643-HS

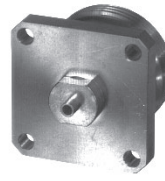


FIG. 10  
RFD-1644-2SR2,  
-2SR3



FIG. 11  
RFD-1650-2



FIG. 12  
RFD-1652-2



FIG. 13  
RFD-1653-2



FIG. 14  
RFD-1658-2



FIG. 15  
RFD-1660-2

PHOTOS FOR REFERENCE ONLY, SHOWN AT 60% ACTUAL SIZE

FOR MOUNTING CONFIGURATIONS

PART #	FIG	DESCRIPTION	CBL GRP	NOTES	PLATING			RECOMMENDED TOOL
					BDY	P/C	DIE	
<a href="#">RFD-1604-2I</a>	1	Male Crimp	I	Straight, for Belden 9913 & Times LMR-400	S	S	T	<a href="#">RFA-4009-205</a>
<a href="#">RFD-1604-2L2</a>	1	Male Crimp	L2	Straight, for Times LMR-600	S	S	T	<a href="#">RFA-4009-201</a>
<a href="#">RFD-1605-2-C</a>	2	Male Crimp	C, C2	Combination Straight or Right Angle, for RG-58/U & Times LMR-200	S	S	T	<a href="#">RFA-4009-206</a>
<a href="#">RFD-1605-2-C1</a>	2	Male Crimp	C1	Combination Straight or Right Angle, for RG-142/U & RG-55/U	S	S	T	<a href="#">RFA-4009-206</a>
<a href="#">RFD-1605-2-E</a>	3	Male Crimp	E, I, PL	Combination Straight or Right Angle, for RG-8/U, RG-213/U, Belden 9913 & Belden 89913 Plenum	S	S	T	<a href="#">RFA-4009-205</a>
<a href="#">RFD-1605-2-L2</a>	3	Male Crimp	L2	Combination Straight or Right Angle, for Times LMR-600	S	S	T	<a href="#">RFA-4009-201</a>
<a href="#">RFD-1605-2-X</a>	2	Male Crimp	X	Combination Straight or Right Angle, for RG-8/X & Times LMR-240	S	S	T	<a href="#">RFA-4009-203</a>
<a href="#">RFD-1625-2-E</a>	4	Female Clamp	E, J, PL	Combination Straight or Right Angle, for RG-8/U, Belden 9913 & Belden 89913 Plenum	S	S	T	
<a href="#">RFD-1630-2-C</a>	5	Female Crimp	C, C2	Combination Straight or Right Angle, for RG-58/U & Times LMR-200	S	S	T	<a href="#">RFA-4009-206</a>
<a href="#">RFD-1630-2-C1</a>	5	Female Crimp	C1	Combination Straight or Right Angle, for RG-142/U	S	S	T	<a href="#">RFA-4009-206</a>
<a href="#">RFD-1630-2-E</a>	6	Female Crimp	E, I, PL	Combination Straight or Right Angle, for RG-8/U, Belden 9913 & Belden 89913 Plenum	S	S	T	<a href="#">RFA-4009-205</a>
<a href="#">RFD-1631-2L2</a>	7	Female Crimp	L2	Straight, for Times LMR-600	S	S	T	<a href="#">RFA-4009-201</a>
<a href="#">RFD-1640-2</a>	8	Female Panel Mount		4-Hole Flange with .111 ID Solder Cup	S	S	T	
<a href="#">RFD-1643-HS</a>	9	Female		4-hole Flange Receptacle	S	S	T	
<a href="#">RFD-1644-2SR2</a>	10	Female Panel Mount	SR2	4 Hole Flange for .141 Semi-Rigid	S	S	T	
<a href="#">RFD-1644-2SR3</a>	10	Female Panel Mount	SR3	4 Hole Flange for .250 Semi-Rigid	S	S	T	
<a href="#">RFD-1650-2</a>	11	<a href="#">Barrel Adapter</a>		7-16 DIN Male to 7-16 DIN Male	S	S	T	
<a href="#">RFD-1652-2</a>	12	<a href="#">Right Angle Adapter</a>		7-16 DIN Male to 7-16 DIN Female	S	S	T	
<a href="#">RFD-1653-2</a>	13	<a href="#">Barrel Adapter</a>		7-16 DIN Female to 7-16 DIN Female	S	S	T	
<a href="#">RFD-1658-2</a>	14	<a href="#">Right Angle Adapter</a>		7-16 DIN Female to 7-16 DIN Female	S	S	T	
<a href="#">RFD-1660-2</a>	15	<a href="#">Barrel Adapter</a>		7-16 DIN Female to 7-16 DIN Male	S	S	T	