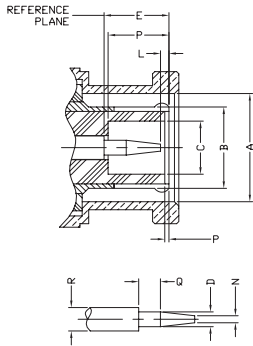
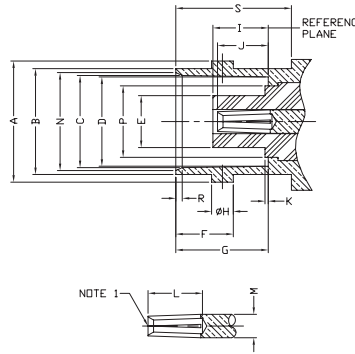


## MALE



LETTER	INCHES [MILLIMETERS]	
	MINIMUM	MAXIMUM
A	.385 [9.78]	.390 [9.91]
B	FLARED TO MEET ELECTRICAL & MECHANICAL REQUIREMENTS	
C	.190 [4.83]	-
D	.052 [1.32]	.054 [1.37]
E	5.33 [210]	.230 [5.84]
F	.006 [0.15]	.018 [0.46]
L	.003 [0.08]	.040 [1.02]
N	-	.025 [0.64]
P	.208 [5.28]	.228 [5.79]
Q	.078 [1.98]	-
R	.081 [2.06]	.087 [2.21]

## FEMALE



LETTER	INCHES [MILLIMETERS]	
	MINIMUM	MAXIMUM
A	.432 [10.97]	.436 [11.07]
B	.375 [9.60]	.382 [9.70]
C	.327 [8.31]	.333 [8.46]
D	.319 [8.10]	.321 [8.15]
E	-	.186 [4.72]
F	.204 [5.18]	.208 [5.28]
G	.327 [8.31]	.335 [8.51]
H	.075 [1.91]	.081 [2.06]
I	.188 [4.78]	.208 [5.28]
J	.186 [4.72]	.206 [5.23]
K	-	.006 [0.15]
L	.195 [4.95]	-
M	.081 [2.06]	.087 [2.21]
N	.346 [8.79]	.356 [9.04]
P	-	.256 [6.50]
R	.015 [0.38]	.030 [0.76]
S	.414 [10.52]	-

NOTE 1: I.D. TO MEET VSWR AND CONTACT RESISTANCE WHEN MATED WITH .052/.054 DIA. PIN

## SPECIFICATIONS

### ELECTRICAL SPECIFICATIONS

IMPEDANCE: 50 Ω  
WORKING VOLTAGE RATING: 500 VRMS @ SEA LEVEL  
FREQUENCY RANGE: 0-4 GHz

### MECHANICAL SPECIFICATIONS

MATING: 2-STUD BAYONET LOCK COUPLING  
INTERFACE: MIL-STD-348, SECTION 301  
CABLING: CLAMP, SOLDERLESS CLAMP, CRIMP AND TWIST ON

### PLATING

G - GOLD  
N - NICKEL  
S - SILVER  
SS - STAINLESS STEEL  
TP - THERMOPLASTIC

### DIELECTRIC MATERIAL

D - DELRIN  
PP - POLYPROPYLENE  
T - PTFE  
TP - THERMOPLASTIC

## CABLE GROUPS

GRP	FOR THESE CABLE TYPES
<b>B</b>	TIMES LMR-100A; RG-174, 188, 188A, 316/U; ALPHA 9174, 9316; BELDEN 7805A, 8216, 83269, 83284, 84316; COMMSCOPE AMC-174, WBC-100
<b>BL</b>	RG-316/U DOUBLE SHIELD; RD-316; BELDEN 83269; COLEMAN 1596
<b>C</b>	TIMES LMR-195; RG-58, 58A, 58C, 141, 141A/U; ANDREW CNT-195, CNT-195-DB, CNT-195-FR; BELDEN 7806A, 8219, 8240, 8259, 8262, 9201, 9203, 9310, 9311; COMMSCOPE WBC-195, WBC-195R, 0268, TCOM-195, TCOM-195-FR; HARBOUR HPF195
<b>C1</b>	RG-55, 55A, 55B, 142, 142A, 142B, 223, 400/U; ALPHA 9055, 9055B, 9223; BELDEN 7806A, 83242, 84142
<b>C2</b>	TIMES LMR-200, MSI-22; ALPHA 9848; BELDEN 7807A; COMMSCOPE AMC-58LL, WBC-200, WBC-200R, TCOM-200, TCOM-200-FR; HARBOUR HPF200
<b>E</b>	RG-8, 8A, 213/U; ALPHA 9008, 9213; BELDEN 8267, 9251, 9880, 89880; INTERCOMP 4082, 22132; TIMES AA-4478
<b>I</b>	RG-8/U TYPE; BELDEN 9913; COMMSCOPE BWC-400, BWC-400R, CUSHCRAFT ULTRALINK TL93605; TIMES AA-5886, AA-6146, LMR-400, LMR-400 ULTRAFLEX; T-COM-400
<b>M</b>	RG-122/U; BELDEN 82907, 88240, 89907; MOTOROLA WHITE PTFE; TIMES MSI-15
<b>P</b>	ANTENNA SPECIALIST K214, PRO-FLEX 800; TIMES AA-3096
<b>PL</b>	BELDEN 89913
<b>X</b>	RG-8X; BELDEN 9258; COMMSCOPE BWC-240, BWC-240R; MICRO 8/U; REMEE 1600; SAXTON 8315; TIMES LMR-240, LMR-240 ULTRAFLEX

**FOR A MORE EXTENSIVE LISTING OF CABLE GROUPS**



Strain reliefs for RG-58/U — available separately  
PT-4015-03-BK (black), PT-4015-03-BL (blue)

# BNC — 50 OHM



FIG. 9  
RFS-2022



FIG. 10  
RFS-2023



FIG. 11  
RFB-1106-B-ST, -B1



FIG. 12  
RFB-1106-I

PHOTOS FOR REFERENCE ONLY, SHOWN AT 100% ACTUAL SIZE.

FOR MOUNTING CONFIGURATIONS

PART #	FIG	DESCRIPTION	CBL GRP	NOTES	REPLACES OR EQUIVALENT TO	PLATING			RECOMMENDED TOOL
						BDY	P/C	DIE	
RFB-1100-2	1	Male Clamp	C, C1	RG-58/U, RG-142/U, RF-55/U	UG-88D/U	N	G	D	RFA-4009-204
RFB-1100-2ST	1	Male Clamp	C, C1	RG-58/U, RG-142/U, RG-55/U	UG-88/U, C/U, D/U, E/U	S	G	T	RFA-4009-204
RFB-1100-B	1	Male Clamp	B	RG-174/U, RG-316/U		N	G	T	RFA-4009-204
RFB-1100-C2ST	1	Male Clamp	C2	for Times LMR-200		S	G	T	RFA-4009-204
RFB-1101-1EN	2	Male Clamp	E, L3	RG-8/U, RG-213/U	UG-959A/U	N	G	T	RFA-4009-206
RFB-1101-1P	1	Male Clamp	P	for Proflex		N	G	T	RFA-4009-203
RFB-1101-1SI	2	Male Clamp	I	for RG-8/U Type, Belden 9913 & Times LMR-400		S	G	T	RFA-4005-200
RFB-1101-1X	1	Male Clamp	X	for RG-8/X & Times LMR-240		N	G	D	
RFB-1101-PL	2	Male Clamp	PL	for Belden 89913 Plenum		S	G	T	RFA-4005-200
RFB-1102-I	3	Male Solderless Clamp	C, C1	RG-58/U, RG-142/U, RG-55/U		N	S	T	
RFB-1104	4	Male Twist-on	C	for RG-58/U		N	S	D	
RFB-1106-2	5	Male Crimp	C	for RG-58/U	UG-1785/U	N	G	D	RFA-4009-206
RFB-1106-2ST	5	Male Crimp	C	for RG-58/U	UG-1785/U	S	G	T	RFA-4009-206
RFB-1106-2T	5	Male Crimp	C	for RG-58/U	UG-1785/U	N	G	T	RFA-4009-206
RFB-1106-2TC1	5	Male Crimp	C1	for RG-142/U & RG-55/U		N	G	T	RFA-4009-206
RFB-1106-5	6	Male Crimp	B	Large Ferrule, for RG-174/U, RG-316/U		N	G	T	RFA-4009-204
RFB-1106-5B1	6	Male Crimp	B1	Large Ferrule, for RG-316 Double Shield		N	G	T	RFA-4009-204
RFB-1106-6	7	Male Crimp	B	Small Ferrule, for RG-174/U & RG-316/U		N	G	T	RFA-4009-204, RFA-4089
RFB-1106-9	8	Male Quick Disconnect Crimp	C	Universal for BNC, & TNC, for RG-58/U		N	G	D	RFA-4009-206
RFS-2022	9	BNC Male Quick Disconnect Crimp	C	for RG-58/U		N	G	T	RFA-4009-206
RFS-2023	10	BNC Female Quick Disconnect Crimp	C	for RG-58/U		N	G	T	RFA-4009-206
RFB-1106-B-ST	11	Male Crimp	B	for RG-174/U & RG-316/U		S	G	T	RFA-4009-204
RFB-1106-B1	11	Male Crimp	B1	for RD-174/U & RG-316		N	G	T	RFA-4009-204
RFB-1106-C-03	5	Male Crimp	C	for RG-58/U		N	G	D	RFA-4009-206
RFB-1106-C1	5	Male Crimp	C1	for RG-142/U		N	G	D	RFA-4009-206
RFB-1106-C1ST	5	Male Crimp	C1	for RG-142/U & RG-55/U		S	G	T	RFA-4009-206
RFB-1106-C2	5	Male Crimp	C2	for Times LMR-200		N	G	T	RFA-4009-206
RFB-1106-C2ST	5	Male Crimp	C2	for Times LMR-200		S	G	T	RFA-4009-206
RFB-1106-C2T	5	Male Crimp	C2	for Times LMR-200		N	G	T	RFA-4009-206
RFB-1106-I	12	Male Crimp	I	for times LMR-400		N	G	T	RFA-4005-300
RFB-1107-1P	5	Male Crimp	P	for Proflex		N	G	D	RFA-4009-203
RFB-1107-1X	5	Male Crimp	X	for RG-8/X & Times LMR-240		N	G	D	RFA-4009-203
RFB-1107-Z	5	Male Crimp	C3, M	for Motorola White PTFE, Belden 89907		N	G	T	RFA-4009-206